

## Pulegge trapezoidali per bussola conica / V-Belt pulleys for taper bushes Keilriemenscheiben für Spannbuchsen / Poulies trapézoidales à moyeu amovible Poleas trapezoidales para casquillos conicos

Le pulegge per cinghie trapezoidali presentate dalla SATI nel presente catalogo sono tutte costruite secondo le tabelle ISO 4183 e DIN 2211-3.

*V-belt pulleys proposed by SATI in this catalogue are all manufactured according to ISO 4183 and DIN 2211-3 norms.*

Die Keilriemenscheiben, die von SATI in diesem Katalog dargestellt sind, sind alle nach ISO 4183 und DIN 2211-3 hergestellt worden.

*Les poulies trapézoidales présentées par la SATI sur ce catalogue sont toutes fabriquées suivant les normes ISO 4183 et DIN 2211-3.*

Las poleas para correas trapezoidales presentadas por la SATI en el presente catálogo están todas construidas según las tablas ISO 4183 y DIN 2211-3.

Il materiale impiegato nella costruzione delle medesime è in ghisa EN-GJL-200 UNI EN 1561 e, successivamente alle lavorazioni meccaniche, subiscono un trattamento superficiale di FOSFATAZIONE.

*The material used for the construction of these pulleys is cast iron EN-GJL-200 UNI EN 1561 and after the machining all pulleys are being PHOSPHATED.*

Das fuer die Produktion verwendete Material ist Grauguss EN-GJL-200 UNI EN 1561 und nach der Bearbeitung werden alle Keilriemenscheiben PHOSPHATIERT.

*Le materiel utilisé pour la fabrication des poulies est la fonte EN-GJL-200 UNI EN 1561 et après l'usinage elles sont toutes exposées à un traitement de PHOSPHATATION.*

El material empleado en la construcción de las mismas es el hierro fundido EN-GJL-200 UNI EN 1561 y después de las elaboraciones mecánicas están sometidas a un tratamiento superficial de FOSFATACIÓN.

Tutte le pulegge sono equilibrate STATICAMENTE ed idonee ad un funzionamento fino alla velocità periferica di 35 m/s.

*All pulleys are STATICALLY balanced and suitable for peripheral speed up to 35 m/s.*

Alle Keilriemenscheiben sind STATISCH ausgewuchtet und fuer eine peripherische Betriebsgeschwindigkeit bis 35 m/s.

*Toutes les poulies sont équilibrées STATIQUEMENT et propres à tourner à une vitesse périphérique jusqu'à 35 m/s.*

Todas las poleas están equilibradas ESTÁTICAMENTE y son adecuadas para un funcionamiento de una velocidad de hasta 35 m/s.

La gamma proposta nel seguente catalogo, comprende: PULEGGE TRAPEZOIDALI, per bussola conica, serie ZT..... AT..... BT..... CT..... AT..... BT..... CT..... PULEGGE TRAPEZOIDALI monoblocco (con mozzo pieno) serie ZM..... AM..... BM..... CM..... PULEGGE TRAPEZOIDALI per calettatore.

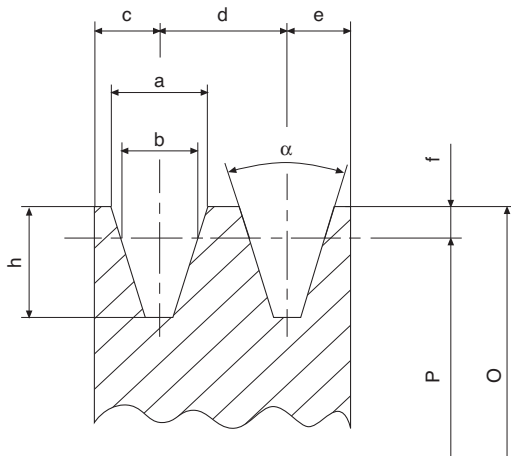
*The range proposed in this catalogue is the following:*

*V-BELT PULLEYS for taper bush, series ZT..... AT..... BT..... CT..... V-BELT PULLEYS with solid hub, series ZM..... AM..... BM..... CM..... V-BELT PULLEYS for locking devices.*

Die in diesem Katalog angegebene Palette ist die folgende: KEILRIEMENSCHLEIBEN fuer Spannbuchse, Serie ZT..... AT..... BT..... CT..... KEILRIEMENSCHLEIBEN ungebohrt, Serie ZM..... AM..... BM..... CM..... KEILRIEMENSCHLEIBEN fuer Spannsätze.

*La gamme proposée dans ce catalogue est la suivante: POULIES TRAPEZOIDALES pour moyeu amovible, série ZT..... AT..... BT..... CT..... POULIES TRAPEZOIDALES à moyeu plein, série ZM..... AM..... BM..... CM..... POULIES TRAPEZOIDALES pour à moyeu de serrage.*

La gama propuesta en el siguiente catálogo comprende: POLEAS TRAPEZOIDALES para casquillos cónicos, serie ZT..... AT..... BT..... CT..... POLEAS TRAPEZOIDALES con cubo pleno, serie ZM..... AM..... BM..... CM..... POLEAS TRAPEZOIDALES para casquillos de fijación.



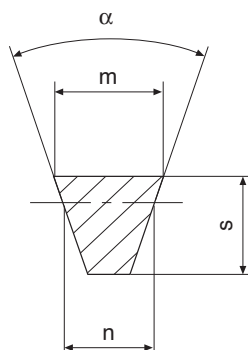
**Calcolo della velocità periferica Vp in m/s**  
**Calculation of peripheral speed Vp in m/s**  
**Berechnung der Umfangsgeschwindigkeit Vp in m/s**  
**Calcul de la vitesse périphérique Vp m/s**  
**Cálculo de la velocidad periférica Vp en m/s**

$$V_p = \frac{p \cdot P \cdot \text{rpm}}{60 \cdot 1000} @ \frac{P \cdot \text{rpm}}{19100} \quad V_p \leq 35 \text{ m/s}$$

P = Diametro primitivo in mm  
Pitch diameter in mm  
Teildurchmesser in mm  
Diamètre primitif en mm  
Diámetro primitivo en mm

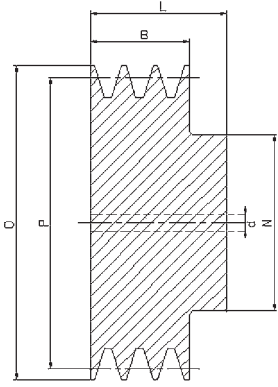
rpm = Giri al minuto  
Revolutions per minute  
Umdrehungen pro Minute  
Tours par minute  
Revoluciones por minuto

| Dimensioni puleggia | Pulley dimintions |      |      | Keilriemenscheibenabmessungen |      |     | Dimensions poulie |         | Dimensiones polea |  |
|---------------------|-------------------|------|------|-------------------------------|------|-----|-------------------|---------|-------------------|--|
|                     | a                 | b    | c    | d                             | e    | f   | h                 | 34°     | 38°               |  |
| SPZ                 | 9,7               | 8,5  | 8,0  | 12,0                          | 8,0  | 2,0 | 11,0              | P ≤ 80  | P > 80            |  |
| SPA                 | 12,7              | 11,0 | 10,0 | 15,0                          | 10,0 | 2,8 | 13,8              | P ≤ 118 | P > 118           |  |
| SPB                 | 16,3              | 14,0 | 12,5 | 19,0                          | 12,5 | 3,5 | 17,5              | P ≤ 190 | P > 190           |  |
| SPC                 | 22,0              | 19,0 | 17,0 | 25,5                          | 17,0 | 4,8 | 23,8              | P ≤ 315 | P > 315           |  |

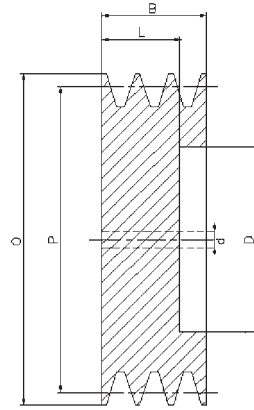


**Dimensioni cinghia / Belt dimintions / Riemenabmessungen**  
**Dimensions courroie / Dimensiones correa**

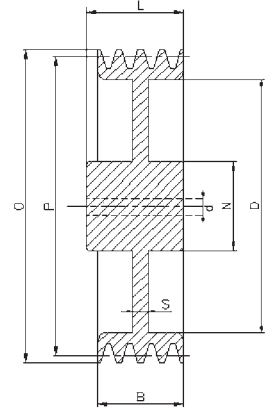
|     | m    | s  | n    |
|-----|------|----|------|
| SPZ | 9,7  | 8  | 8,5  |
| SPA | 12,7 | 10 | 11,0 |
| SPB | 16,3 | 13 | 14,0 |
| SPC | 22,0 | 18 | 19,0 |



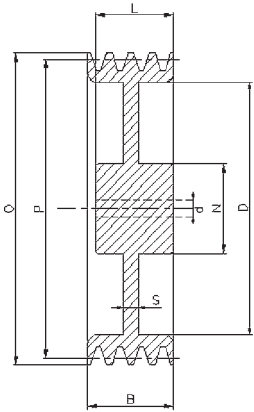
1



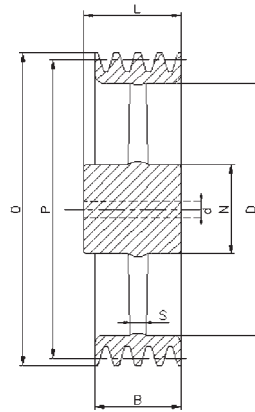
2



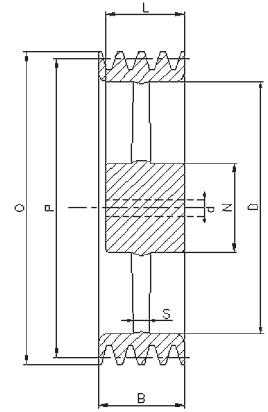
3



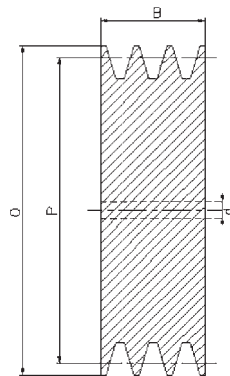
4



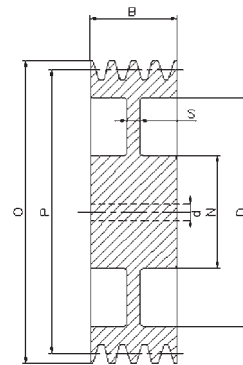
5



6



7



8

| Cod. interno<br>Internal code<br>Internar Code<br>Code interne<br>Código interno | Descrizione<br>Description<br>Beschreibung<br>Description<br>Descripción | P          | O   | Gole<br>Grooves<br>Rillen<br>Gorges<br>Canales | N  | L  | D   | S | B  | Forma<br>Form<br>Forme<br>Forme<br>Forma | d  | Peso<br>Weight<br>Gewicht<br>Poids<br>Peso |
|--|--|------------|-----|--|----|----|-----|---|----|--|----|--|
| ZM00501  | SPZ50  | <b>50</b>  | 54  | 1  | 40 | 28 |     |   | 16 | 1  | 10 |  |
| ZM00502  |  |            |     | 2  | 40 | 35 |     |   | 28 | 1  | 10 |  |
| ZM00503  |  |            |     | 3  |    |    |     |   | 40 | 7  | 10 |  |
| ZM00561  | SPZ56  | <b>56</b>  | 60  | 1  | 45 | 28 |     |   | 16 | 1  | 10 |  |
| ZM00562  |  |            |     | 2  | 45 | 35 |     |   | 28 | 1  | 10 |  |
| ZM00563  |  |            |     | 3  |    |    |     |   | 40 | 7  | 10 |  |
| ZM00631  | SPZ63  | <b>63</b>  | 67  | 1  | 50 | 28 |     |   | 16 | 1  | 10 |  |
| ZM00632  |  |            |     | 2  | 50 | 35 |     |   | 28 | 1  | 10 |  |
| ZM00633  |  |            |     | 3  |    |    |     |   | 40 | 7  | 10 |  |
| ZM00711  | SPZ71  | <b>71</b>  | 75  | 1  | 50 | 28 |     |   | 16 | 1  | 10 |  |
| ZM00712  |  |            |     | 2  | 55 | 35 |     |   | 28 | 1  | 10 |  |
| ZM00713  |  |            |     | 3  |    |    |     |   | 40 | 7  | 10 |  |
| ZM00751  | SPZ75  | <b>75</b>  | 79  | 1  | 50 | 28 |     |   | 16 | 1  | 10 |  |
| ZM00752  |  |            |     | 2  | 60 | 35 |     |   | 28 | 1  | 10 |  |
| ZM00753  |  |            |     | 3  |    |    |     |   | 40 | 7  | 10 |  |
| ZM00801  | SPZ80  | <b>80</b>  | 84  | 1  | 50 | 28 |     |   | 16 | 1  | 10 |  |
| ZM00802  |  |            |     | 2  | 60 | 35 |     |   | 28 | 1  | 10 |  |
| ZM00803  |  |            |     | 3  |    |    |     |   | 40 | 7  | 10 |  |
| ZM00851  | SPZ85  | <b>85</b>  | 89  | 1  | 50 | 28 |     |   | 16 | 1  | 10 |  |
| ZM00852  |  |            |     | 2  | 60 | 35 |     |   | 28 | 1  | 10 |  |
| ZM00853  |  |            |     | 3  |    |    |     |   | 40 | 7  | 15 |  |
| ZM00901  | SPZ90  | <b>90</b>  | 94  | 1  | 50 | 28 |     |   | 16 | 1  | 10 |  |
| ZM00902  |  |            |     | 2  | 60 | 35 |     |   | 28 | 1  | 10 |  |
| ZM00903  |  |            |     | 3  |    |    |     |   | 40 | 7  | 15 |  |
| ZM00951  | SPZ95  | <b>95</b>  | 99  | 1  | 50 | 28 |     |   | 16 | 1  | 10 |  |
| ZM00952  |  |            |     | 2  | 60 | 35 |     |   | 28 | 1  | 15 |  |
| ZM00953  |  |            |     | 3  |    |    |     |   | 40 | 7  | 15 |  |
| ZM01001  | SPZ100   | <b>100</b> | 104 | 1  | 50 | 28 |     |   | 16 | 1  | 10 |  |
| ZM01002  |  |            |     | 2  | 60 | 35 |     |   | 28 | 1  | 15 |  |
| ZM01003  |  |            |     | 3  |    |    |     |   | 40 | 7  | 15 |  |
| ZM01061  | SPZ106   | <b>106</b> | 110 | 1  | 50 | 28 |     |   | 16 | 1  | 10 |  |
| ZM01062  |  |            |     | 2  | 60 | 35 |     |   | 28 | 1  | 15 |  |
| ZM01063  |  |            |     | 3  |    |    |     |   | 40 | 7  | 15 |  |
| ZM01121  | SPZ112   | <b>112</b> | 116 | 1  | 50 | 28 |     |   | 16 | 1  | 10 |  |
| ZM01122  |  |            |     | 2  | 60 | 35 |     |   | 28 | 1  | 15 |  |
| ZM01123  |  |            |     | 3  |    |    |     |   | 40 | 7  | 15 |  |
| ZM01181  | SPZ118   | <b>118</b> | 122 | 1  | 50 | 28 | 93  | 8 | 16 | 3  | 10 |  |
| ZM01182  |  |            |     | 2  | 60 | 35 | 91  | 8 | 28 | 3  | 15 |  |
| ZM01183  |  |            |     | 3  |    |    |     |   | 40 | 7  | 15 |  |
| ZM01251  | SPZ125   | <b>125</b> | 129 | 1  | 50 | 28 | 100 | 8 | 16 | 3  | 15 |  |
| ZM01252  |  |            |     | 2  | 60 | 35 | 99  | 8 | 28 | 3  | 15 |  |
| ZM01253  |  |            |     | 3  |    |    |     |   | 40 | 7  | 15 |  |

| Cod. interno<br>Internal code<br>Code interne<br>Código interno | Descrizione<br>Description<br>Beschreibung<br>Description<br>Descripción | P          | O   | Gole<br>Grooves<br>Rillen<br>Gorges<br>Canales | N  | L  | D   | S  | B  | Forma<br>Form<br>Forme<br>Forme<br>Forma | d  | Peso<br>Weight<br>Gewicht<br>Poids<br>Peso |
|---|--|------------|-----|--|----|----|-----|----|----|--|----|--|
| ZM01321   | SPZ132   | <b>132</b> | 136 | 1  | 50 | 28 | 106 | 8  | 16 | 3  | 15 |  |
| ZM01322   |  |            |     | 2  | 60 | 40 | 106 | 8  | 28 | 3  | 15 |  |
| ZM01323   |  |            |     | 3  | 60 | 40 | 106 | 8  | 40 | 8  | 15 |  |
| ZM01401   | SPZ140   | <b>140</b> | 144 | 1  | 50 | 28 | 114 | 8  | 16 | 3  | 15 |  |
| ZM01402   |  |            |     | 2  | 60 | 40 | 114 | 8  | 28 | 3  | 15 |  |
| ZM01403   |  |            |     | 3  | 60 | 40 | 114 | 8  | 40 | 8  | 15 |  |
| ZM01501   | SPZ150   | <b>150</b> | 154 | 1  | 50 | 28 | 124 | 8  | 16 | 3  | 15 |  |
| ZM01502   |  |            |     | 2  | 60 | 40 | 124 | 8  | 28 | 3  | 15 |  |
| ZM01503   |  |            |     | 3  | 60 | 40 | 124 | 8  | 40 | 8  | 20 |  |
| ZM01601   | SPZ160   | <b>160</b> | 164 | 1  | 55 | 32 | 134 | 8  | 16 | 3  | 15 |  |
| ZM01602   |  |            |     | 2  | 60 | 40 | 134 | 8  | 28 | 3  | 15 |  |
| ZM01603   |  |            |     | 3  | 65 | 45 | 134 | 8  | 40 | 3  | 20 |  |
| ZM01801   | SPZ180   | <b>180</b> | 184 | 1  | 55 | 32 | 154 | 8  | 16 | 5  | 20 |  |
| ZM01802   |  |            |     | 2  | 60 | 40 | 154 | 8  | 28 | 5  | 20 |  |
| ZM01803   |  |            |     | 3  | 65 | 45 | 154 | 8  | 40 | 5  | 20 |  |
| ZM02001   | SPZ200   | <b>200</b> | 204 | 1  | 55 | 32 | 174 | 8  | 16 | 5  | 20 |  |
| ZM02002   |  |            |     | 2  | 60 | 40 | 174 | 8  | 28 | 5  | 20 |  |
| ZM02003   |  |            |     | 3  | 65 | 45 | 174 | 10 | 40 | 5  | 20 |  |
| ZM02241   | SPZ224   | <b>224</b> | 228 | 1  | 55 | 32 | 198 | 8  | 16 | 5  | 20 |  |
| ZM02242   |  |            |     | 2  | 60 | 40 | 198 | 8  | 28 | 5  | 20 |  |
| ZM02243   |  |            |     | 3  | 65 | 45 | 198 | 10 | 40 | 5  | 20 |  |
| ZM02501   | SPZ250   | <b>250</b> | 254 | 1  | 55 | 32 | 224 | 8  | 16 | 5  | 20 |  |
| ZM02502   |  |            |     | 2  | 60 | 40 | 224 | 10 | 28 | 5  | 20 |  |
| ZM02503   |  |            |     | 3  | 65 | 45 | 224 | 12 | 40 | 5  | 20 |  |
| ZM02802   | SPZ280   | <b>280</b> | 284 | 2  | 65 | 45 | 254 | 10 | 28 | 5  | 20 |  |
| ZM03152   | SPZ315   | <b>315</b> | 319 | 2  | 65 | 45 | 289 | 10 | 28 | 5  | 20 |  |

| Cod. interno<br>Internal code<br>Internar Code<br>Code interne<br>Código interno | Descrizione<br>Description<br>Beschreibung<br>Description<br>Descripción | P          | O     | Gole<br>Grooves<br>Rillen<br>Gorges<br>Canales | N  | L  | D  | S | B  | Forma<br>Form<br>Forme<br>Forme<br>Forma | d  | Peso<br>Weight<br>Gewicht<br>Poids<br>Peso |
|--|--|------------|-------|--|----|----|----|---|----|--|----|--|
| AM00401  | SPA40  | <b>40</b>  | 45,5  | 1  | 40 | 35 |    |   | 20 | 1  | 10 |  |
| AM00501  | SPA50  | <b>50</b>  | 55,5  | 1  | 40 | 35 |    |   | 20 | 1  | 10 |  |
| AM00502  |  |            |       | 2  | 40 | 45 |    |   | 35 | 1  | 10 |  |
| AM00561  | SPA56  | <b>56</b>  | 61,5  | 1  | 40 | 35 |    |   | 20 | 1  | 10 |  |
| AM00562  |  |            |       | 2  | 40 | 45 |    |   | 35 | 1  | 10 |  |
| AM00563  |  |            |       | 3  |    |    |    |   | 50 | 7  | 10 |  |
| AM00603  | SPA60  | <b>60</b>  | 65,5  | 3  |    |    |    |   | 50 | 7  | 10 |  |
| AM00631  | SPA63  | <b>63</b>  | 68,5  | 1  | 40 | 35 |    |   | 20 | 1  | 10 |  |
| AM00632  |  |            |       | 2  | 40 | 45 |    |   | 35 | 1  | 10 |  |
| AM00633  |  |            |       | 3  |    |    |    |   | 50 | 7  | 10 |  |
| AM00711  | SPA71  | <b>71</b>  | 76,5  | 1  | 40 | 40 |    |   | 20 | 1  | 10 |  |
| AM00712  |  |            |       | 2  | 50 | 45 |    |   | 35 | 1  | 10 |  |
| AM00713  |  |            |       | 3  |    |    |    |   | 50 | 7  | 10 |  |
| AM00751  | SPA75  | <b>75</b>  | 80,5  | 1  | 40 | 40 |    |   | 20 | 1  | 10 |  |
| AM00752  |  |            |       | 2  | 50 | 45 |    |   | 35 | 1  | 10 |  |
| AM00753  |  |            |       | 3  |    |    |    |   | 50 | 7  | 10 |  |
| AM00754  |  |            |       | 4  |    |    |    |   | 65 | 7  | 10 |  |
| AM00755  |  |            |       | 5  |    |    |    |   | 80 | 7  | 10 |  |
| AM00801  | SPA80  | <b>80</b>  | 85,5  | 1  | 45 | 40 |    |   | 20 | 1  | 10 |  |
| AM00802  |  |            |       | 2  | 50 | 45 |    |   | 35 | 1  | 10 |  |
| AM00803  |  |            |       | 3  |    |    |    |   | 50 | 7  | 15 |  |
| AM00804  |  |            |       | 4  |    |    |    |   | 65 | 7  | 15 |  |
| AM00805  |  |            |       | 5  |    |    |    |   | 80 | 7  | 15 |  |
| AM00851  | SPA85  | <b>85</b>  | 90,5  | 1  | 45 | 40 |    |   | 20 | 1  | 10 |  |
| AM00852  |  |            |       | 2  | 50 | 45 |    |   | 35 | 1  | 10 |  |
| AM00853  |  |            |       | 3  |    |    |    |   | 50 | 7  | 15 |  |
| AM00854  |  |            |       | 4  |    |    |    |   | 65 | 7  | 15 |  |
| AM00855  |  |            |       | 5  |    |    |    |   | 80 | 7  | 15 |  |
| AM00901  | SPA90  | <b>90</b>  | 95,5  | 1  | 45 | 40 |    |   | 20 | 1  | 10 |  |
| AM00902  |  |            |       | 2  | 60 | 45 |    |   | 35 | 1  | 15 |  |
| AM00903  |  |            |       | 3  |    |    |    |   | 50 | 7  | 15 |  |
| AM00904  |  |            |       | 4  |    |    |    |   | 65 | 7  | 15 |  |
| AM00905  |  |            |       | 5  |    |    |    |   | 80 | 7  | 15 |  |
| AM00951  | SPA95  | <b>95</b>  | 100,5 | 1  | 45 | 40 |    |   | 20 | 1  | 10 |  |
| AM00952  |  |            |       | 2  | 60 | 45 |    |   | 35 | 1  | 15 |  |
| AM00953  |  |            |       | 3  |    |    |    |   | 50 | 7  | 15 |  |
| AM00954  |  |            |       | 4  |    |    |    |   | 65 | 7  | 15 |  |
| AM00955  |  |            |       | 5  |    |    |    |   | 80 | 7  | 15 |  |
| AM01001  | SPA100   | <b>100</b> | 105,5 | 1  | 48 | 40 |    |   | 20 | 1  | 10 |  |
| AM01002  |  |            |       | 2  | 60 | 45 |    |   | 35 | 1  | 15 |  |
| AM01003  |  |            |       | 3  |    |    |    |   | 50 | 7  | 15 |  |
| AM01004  |  |            |       | 4  |    | 52 | 67 |   | 65 | 2  | 15 |  |
| AM01005  |  |            |       | 5  |    | 52 | 67 |   | 80 | 2  | 15 |  |
| AM01061  | SPA106   | <b>106</b> | 111,5 | 1  | 48 | 40 |    |   | 20 | 1  | 10 |  |
| AM01062  |  |            |       | 2  | 60 | 45 |    |   | 35 | 1  | 15 |  |
| AM01063  |  |            |       | 3  |    |    |    |   | 50 | 7  | 15 |  |
| AM01065  |  |            |       | 5  |    | 52 | 67 |   | 80 | 2  | 15 |  |
| AM01121  | SPA112   | <b>112</b> | 117,5 | 1  | 48 | 40 |    |   | 20 | 1  | 10 |  |
| AM01122  |  |            |       | 2  | 60 | 45 |    |   | 35 | 1  | 15 |  |
| AM01123  |  |            |       | 3  |    |    |    |   | 50 | 7  | 15 |  |
| AM01124  |  |            |       | 4  |    | 52 | 79 |   | 65 | 2  | 15 |  |
| AM01125  |  |            |       | 5  |    | 52 | 79 |   | 80 | 2  | 15 |  |
| AM01181  | SPA118   | <b>118</b> | 123,5 | 1  | 60 | 40 |    |   | 20 | 1  | 15 |  |
| AM01182  |  |            |       | 2  | 60 | 45 |    |   | 35 | 1  | 15 |  |
| AM01183  |  |            |       | 3  |    |    |    |   | 50 | 7  | 15 |  |
| AM01184  |  |            |       | 4  |    | 52 | 87 |   | 65 | 2  | 15 |  |
| AM01185  |  |            |       | 5  |    | 52 | 87 |   | 80 | 2  | 15 |  |

| Cod. interno<br>Internal code<br>Internar Code<br>Code interne<br>Código interno | Descrizione<br>Description<br>Beschreibung<br>Description<br>Descripción | P          | O     | Gole<br>Grooves<br>Rillen<br>Gorges<br>Canales | N   | L  | D   | S  | B  | Forma<br>Form<br>Forme<br>Forme<br>Forma | d  | Peso<br>Weight<br>Gewicht<br>Poids<br>Peso |
|--|--|------------|-------|--|-----|----|-----|----|----|--|----|--|
| AM01251  | SPA125   | <b>125</b> | 130,5 | 1  | 60  | 40 |     |    | 20 | 1  | 15 |  |
| AM01252  |  |            |       | 2  | 60  | 45 |     |    | 35 | 1  | 15 |  |
| AM01253  |  |            |       | 3  |     |    |     |    | 50 | 7  | 15 |  |
| AM01254  |  |            |       | 4  |     | 52 | 97  |    | 65 | 2  | 15 |  |
| AM01321  | SPA132   | <b>132</b> | 137,5 | 1  | 60  | 40 |     |    | 20 | 1  | 15 |  |
| AM01322  |  |            |       | 2  | 60  | 45 |     |    | 35 | 1  | 15 |  |
| AM01323  |  |            |       | 3  |     |    |     |    | 50 | 7  | 15 |  |
| AM01324  |  |            |       | 4  |     | 52 | 97  |    | 65 | 2  | 15 |  |
| AM01325  |  |            |       | 5  |     | 52 | 97  |    | 80 | 2  | 15 |  |
| AM01401  | SPA140   | <b>140</b> | 145,5 | 1  | 60  | 40 | 107 | 10 | 20 | 3  | 15 |  |
| AM01402  |  |            |       | 2  | 60  | 45 | 107 | 10 | 35 | 3  | 15 |  |
| AM01403  |  |            |       | 3  | 65  | 52 | 107 | 18 | 50 | 3  | 20 |  |
| AM01404  |  |            |       | 4  |     | 52 | 107 |    | 65 | 2  | 20 |  |
| AM01405  |  |            |       | 5  |     | 52 | 107 |    | 80 | 2  | 20 |  |
| AM01501  | SPA150   | <b>150</b> | 155,5 | 1  | 60  | 40 | 117 | 10 | 20 | 3  | 15 |  |
| AM01502  |  |            |       | 2  | 60  | 45 | 117 | 10 | 35 | 3  | 15 |  |
| AM01503  |  |            |       | 3  | 65  | 52 | 117 | 18 | 50 | 3  | 20 |  |
| AM01504  |  |            |       | 4  |     | 52 | 117 |    | 65 | 2  | 20 |  |
| AM01505  |  |            |       | 5  |     | 52 | 117 |    | 80 | 2  | 20 |  |
| AM01601  | SPA160   | <b>160</b> | 165,5 | 1  | 60  | 40 | 127 | 10 | 20 | 3  | 15 |  |
| AM01602  |  |            |       | 2  | 60  | 45 | 127 | 10 | 35 | 3  | 15 |  |
| AM01603  |  |            |       | 3  | 70  | 52 | 127 | 18 | 50 | 3  | 20 |  |
| AM01604  |  |            |       | 4  | 70  | 52 | 127 | 22 | 65 | 4  | 20 |  |
| AM01605  |  |            |       | 5  | 80  | 52 | 127 | 22 | 80 | 4  | 20 |  |
| AM01701  | SPA170   | <b>170</b> | 175,5 | 1  | 60  | 40 | 137 | 10 | 20 | 3  | 15 |  |
| AM01702  |  |            |       | 2  | 60  | 45 | 137 | 10 | 35 | 3  | 15 |  |
| AM01703  |  |            |       | 3  | 70  | 52 | 137 | 18 | 50 | 3  | 20 |  |
| AM01704  |  |            |       | 4  | 80  | 52 | 137 | 18 | 65 | 4  | 20 |  |
| AM01705  |  |            |       | 5  | 80  | 52 | 137 | 18 | 80 | 4  | 20 |  |
| AM01801  | SPA180   | <b>180</b> | 185,5 | 1  | 65  | 40 | 147 | 10 | 20 | 3  | 20 |  |
| AM01802  |  |            |       | 2  | 70  | 50 | 147 | 12 | 35 | 3  | 20 |  |
| AM01803  |  |            |       | 3  | 70  | 52 | 147 | 12 | 50 | 3  | 20 |  |
| AM01804  |  |            |       | 4  | 80  | 60 | 147 | 22 | 65 | 4  | 20 |  |
| AM01805  |  |            |       | 5  | 80  | 65 | 147 | 22 | 80 | 4  | 20 |  |
| AM01902  | SPA190   | <b>190</b> | 195,5 | 2  | 70  | 50 | 157 | 12 | 35 | 3  | 20 |  |
| AM01903  |  |            |       | 3  | 70  | 52 | 157 | 12 | 50 | 3  | 20 |  |
| AM01904  |  |            |       | 4  | 80  | 60 | 157 | 18 | 65 | 4  | 20 |  |
| AM02001  | SPA200   | <b>200</b> | 205,5 | 1  | 65  | 45 | 167 | 10 | 20 | 3  | 20 |  |
| AM02002  |  |            |       | 2  | 70  | 50 | 167 | 12 | 35 | 3  | 20 |  |
| AM02003  |  |            |       | 3  | 70  | 52 | 167 | 12 | 50 | 3  | 20 |  |
| AM02004  |  |            |       | 4  | 80  | 60 | 167 | 18 | 65 | 4  | 20 |  |
| AM02005  |  |            |       | 5  | 80  | 65 | 167 | 20 | 80 | 4  | 20 |  |
| AM02121  | SPA212   | <b>212</b> | 217,5 | 1  | 65  | 40 |     | 10 | 20 | 3  | 20 |  |
| AM02122  |  |            |       | 2  | 70  | 45 |     | 12 | 35 | 3  | 20 |  |
| AM02241  | SPA224   | <b>224</b> | 229,5 | 1  | 65  | 45 | 192 | 10 | 20 | 3  | 20 |  |
| AM02242  |  |            |       | 2  | 70  | 50 | 192 | 12 | 35 | 3  | 20 |  |
| AM02243  |  |            |       | 3  | 80  | 52 | 192 | 12 | 50 | 3  | 20 |  |
| AM02244  |  |            |       | 4  | 90  | 60 | 192 | 18 | 65 | 4  | 20 |  |
| AM02245  |  |            |       | 5  | 90  | 65 | 192 | 20 | 80 | 4  | 20 |  |
| AM02361  | SPA236   | <b>236</b> | 241,5 | 1  |     | 50 |     | 12 | 20 | 3  | 20 |  |
| AM02362  |  |            |       | 2  |     | 50 |     | 12 | 35 | 3  | 20 |  |
| AM02501  | SPA250   | <b>250</b> | 255,5 | 1  | 75  | 50 | 217 | 12 | 20 | 3  | 20 |  |
| AM02502  |  |            |       | 2  | 75  | 50 | 217 | 12 | 35 | 3  | 20 |  |
| AM02503  |  |            |       | 3  | 80  | 60 | 217 | 12 | 50 | 3  | 20 |  |
| AM02504  |  |            |       | 4  | 90  | 65 | 217 | 18 | 65 | 3  | 20 |  |
| AM02505  |  |            |       | 5  | 90  | 65 | 217 | 20 | 80 | 4  | 20 |  |
| AM02801  | SPA280   | <b>280</b> | 285,5 | 1  | 75  | 50 | 247 | 14 | 20 | 5  | 20 |  |
| AM02802  |  |            |       | 2  | 80  | 50 | 247 | 14 | 35 | 5  | 20 |  |
| AM02803  |  |            |       | 3  | 80  | 60 | 247 | 14 | 50 | 5  | 20 |  |
| AM02804  |  |            |       | 4  | 90  | 65 | 247 | 16 | 65 | 5  | 20 |  |
| AM02805  |  |            |       | 5  | 100 | 65 | 247 | 18 | 80 | 6  | 25 |  |

| Cod. interno<br>Internal code<br>Intern Code<br>Code interne<br>Código interno | Descrizione<br>Description<br>Beschreibung<br>Description<br>Descripción | P          | O     | Gole<br>Grooves<br>Rillen<br>Gorges<br>Canales | N   | L  | D   | S  | B  | Forma<br>Form<br>Forme<br>Forme<br>Forma | d  | Peso<br>Weight<br>Gewicht<br>Poids<br>Peso |
|--|--|------------|-------|--|-----|----|-----|----|----|--|----|--|
| AM03001  | SPA300   | <b>300</b> | 305,5 | 1  | 75  | 50 | 267 | 14 | 20 | 5  | 20 |  |
| AM03002  |  |            |       | 2  | 80  | 50 | 267 | 14 | 35 | 5  | 20 |  |
| AM03003  |  |            |       | 3  | 80  | 60 | 267 | 14 | 50 | 5  | 20 |  |
| AM03004  |  |            |       | 4  | 90  | 65 | 267 | 16 | 65 | 5  | 20 |  |
| AM03005  |  |            |       | 5  | 100 | 65 | 267 | 18 | 80 | 6  | 25 |  |
| AM03151  | SPA315   | <b>315</b> | 320,5 | 1  | 75  | 60 | 282 | 14 | 20 | 5  | 20 |  |
| AM03152  |  |            |       | 2  | 80  | 50 | 282 | 14 | 35 | 5  | 20 |  |
| AM03153  |  |            |       | 3  | 90  | 60 | 282 | 14 | 50 | 5  | 20 |  |
| AM03154  |  |            |       | 4  | 90  | 65 | 282 | 16 | 65 | 5  | 20 |  |
| AM03155  |  |            |       | 5  | 100 | 65 | 282 | 18 | 80 | 6  | 25 |  |
| AM03551  | SPA355   | <b>355</b> | 360,5 | 1  | 75  | 50 | 322 | 14 | 20 | 5  | 20 |  |
| AM03552  |  |            |       | 2  | 80  | 50 | 322 | 14 | 35 | 5  | 20 |  |
| AM03553  |  |            |       | 3  | 90  | 60 | 322 | 14 | 50 | 5  | 20 |  |
| AM03554  |  |            |       | 4  | 90  | 65 | 322 | 16 | 65 | 5  | 25 |  |
| AM03555  |  |            |       | 5  | 100 | 65 | 322 | 18 | 80 | 6  | 25 |  |
| AM04001  | SPA400   | <b>400</b> | 405,5 | 1  | 90  | 50 | 367 | 14 | 20 | 5  | 20 |  |
| AM04002  |  |            |       | 2  | 90  | 50 | 367 | 14 | 35 | 5  | 20 |  |
| AM04003  |  |            |       | 3  | 100 | 60 | 367 | 16 | 50 | 5  | 25 |  |
| AM04004  |  |            |       | 4  | 100 | 65 | 367 | 20 | 65 | 5  | 25 |  |
| AM04005  |  |            |       | 5  | 100 | 65 | 367 | 22 | 80 | 6  | 25 |  |
| AM04501  | SPA450   | <b>450</b> | 455,5 | 1  | 90  | 50 | 417 | 14 | 20 | 5  | 20 |  |
| AM04502  |  |            |       | 2  | 100 | 50 | 417 | 14 | 35 | 5  | 25 |  |
| AM04503  |  |            |       | 3  | 100 | 60 | 417 | 16 | 50 | 5  | 25 |  |
| AM04504  |  |            |       | 4  | 105 | 65 | 417 | 20 | 65 | 6  | 25 |  |
| AM04505  |  |            |       | 5  | 105 | 65 | 417 | 22 | 80 | 6  | 25 |  |
| AM05001  | SPA500   | <b>500</b> | 505,5 | 1  | 90  | 50 | 467 | 14 | 20 | 5  | 20 |  |
| AM05002  |  |            |       | 2  | 100 | 50 | 467 | 16 | 35 | 5  | 25 |  |
| AM05003  |  |            |       | 3  | 105 | 60 | 467 | 20 | 50 | 5  | 25 |  |
| AM05004  |  |            |       | 4  | 105 | 65 | 467 | 20 | 65 | 6  | 25 |  |
| AM05005  |  |            |       | 5  | 110 | 65 | 467 | 22 | 80 | 6  | 25 |  |
| AM05601  | SPA560   | <b>560</b> | 565,5 | 1  | 100 | 50 | 527 | 15 | 20 | 5  | 25 |  |
| AM05602  |  |            |       | 2  | 100 | 50 | 527 | 18 | 35 | 5  | 25 |  |
| AM05603  |  |            |       | 3  | 120 | 65 | 527 | 20 | 50 | 5  | 25 |  |
| AM05604  |  |            |       | 4  | 120 | 65 | 527 | 22 | 65 | 5  | 25 |  |
| AM05605  |  |            |       | 5  | 120 | 80 | 527 | 24 | 80 | 5  | 25 |  |
| AM05606  |  |            |       | 6  | 120 | 80 | 527 | 26 | 95 | 6  | 25 |  |
| AM06301  | SPA630   | <b>630</b> | 635,5 | 1  | 100 | 50 | 597 | 16 | 20 | 5  | 25 |  |
| AM06302  |  |            |       | 2  | 110 | 50 | 597 | 18 | 35 | 5  | 25 |  |
| AM06303  |  |            |       | 3  | 120 | 65 | 597 | 20 | 50 | 5  | 25 |  |
| AM06304  |  |            |       | 4  | 120 | 65 | 597 | 22 | 65 | 5  | 25 |  |
| AM06305  |  |            |       | 5  | 120 | 80 | 597 | 24 | 80 | 5  | 25 |  |
| AM06306  |  |            |       | 6  | 120 | 80 | 597 | 26 | 95 | 6  | 25 |  |

| Cod. interno<br>Internal code<br>Internet Code<br>Code interne<br>Código interno | Descrizione<br>Description<br>Beschreibung<br>Description<br>Descripción | P          | O   | Gole<br>Grooves<br>Rillen<br>Gorges<br>Canales | N  | L  | D   | S | B   | Forma<br>Form<br>Forme<br>Forme<br>Forma | d  | Peso<br>Weight<br>Gewicht<br>Poids<br>Peso |
|--|--|------------|-----|--|----|----|-----|---|-----|--|----|--|
| BM00631  | SPB63  | <b>63</b>  | 70  | 1  | 45 | 45 |     |   | 25  | 1  | 10 |  |
| BM00701  | SPB70  | <b>70</b>  | 77  | 1  | 45 | 45 |     |   | 25  | 1  | 10 |  |
| BM00702  |  |            |     | 2  | 45 | 55 |     |   | 44  | 1  | 10 |  |
| BM00713  | SPB71  | <b>71</b>  | 78  | 3  |    |    |     |   | 63  | 7  | 15 |  |
| BM00801  | SPB80  | <b>80</b>  | 87  | 1  | 50 | 45 |     |   | 25  | 1  | 10 |  |
| BM00802  |  |            |     | 2  | 50 | 55 |     |   | 44  | 1  | 10 |  |
| BM00803  |  |            |     | 3  |    |    |     |   | 63  | 7  | 15 |  |
| BM00804  |  |            |     | 4  |    |    |     |   | 82  | 7  | 15 |  |
| BM00805  |  |            |     | 5  |    |    |     |   | 101 | 7  | 15 |  |
| BM00851  | SPB85  | <b>85</b>  | 92  | 1  | 50 | 45 |     |   | 25  | 1  | 10 |  |
| BM00852  |  |            |     | 2  | 50 | 55 |     |   | 44  | 1  | 10 |  |
| BM00853  |  |            |     | 3  | -  | -  |     |   | 63  | 7  | 15 |  |
| BM00901  | SPB90  | <b>90</b>  | 97  | 1  | 50 | 45 |     |   | 25  | 1  | 10 |  |
| BM00902  |  |            |     | 2  | 50 | 55 |     |   | 44  | 1  | 10 |  |
| BM00903  |  |            |     | 3  |    |    |     |   | 63  | 7  | 15 |  |
| BM00904  |  |            |     | 4  |    |    |     |   | 82  | 7  | 15 |  |
| BM00905  |  |            |     | 5  |    |    |     |   | 101 | 7  | 15 |  |
| BM00951  | SPB95  | <b>95</b>  | 102 | 1  | 50 | 45 |     |   | 25  | 1  | 10 |  |
| BM01001  | SPB100   | <b>100</b> | 107 | 1  | 52 | 45 |     |   | 25  | 1  | 10 |  |
| BM01002  |  |            |     | 2  | 55 | 55 |     |   | 44  | 1  | 15 |  |
| BM01003  |  |            |     | 3  |    |    |     |   | 63  | 7  | 15 |  |
| BM01004  |  |            |     | 4  |    |    |     |   | 82  | 7  | 15 |  |
| BM01005  |  |            |     | 5  |    |    |     |   | 101 | 7  | 15 |  |
| BM01061  | SPB106   | <b>106</b> | 113 | 1  |    | 45 |     |   | 25  | 1  | 15 |  |
| BM01062  |  |            |     | 2  |    | 55 |     |   | 44  | 1  | 15 |  |
| BM01121  | SPB112   | <b>112</b> | 119 | 1  | 55 | 45 |     |   | 25  | 1  | 15 |  |
| BM01122  |  |            |     | 2  | 60 | 55 |     |   | 44  | 1  | 15 |  |
| BM01123  |  |            |     | 3  |    |    |     |   | 63  | 7  | 15 |  |
| BM01124  |  |            |     | 4  |    |    |     |   | 82  | 7  | 20 |  |
| BM01125  |  |            |     | 5  |    |    |     |   | 101 | 7  | 20 |  |
| BM01181  | SPB118   | <b>118</b> | 125 | 1  | 55 | 45 |     |   | 25  | 1  | 15 |  |
| BM01182  |  |            |     | 2  | 60 | 55 |     |   | 44  | 1  | 15 |  |
| BM01183  |  |            |     | 3  |    |    |     |   | 63  | 7  | 15 |  |
| BM01184  |  |            |     | 4  |    |    |     |   | 82  | 7  | 20 |  |
| BM01185  |  |            |     | 5  |    |    |     |   | 101 | 7  | 20 |  |
| BM01186  |  |            |     | 6  |    |    |     |   | 120 | 7  | 20 |  |
| BM01201  | SPB120   | <b>120</b> | 127 | 1  | 55 | 45 |     |   | 25  | 1  | 15 |  |
| BM01202  |  |            |     | 2  | 60 | 55 |     |   | 44  | 1  | 15 |  |
| BM01203  |  |            |     | 3  |    |    |     |   | 63  | 7  | 15 |  |
| BM01204  |  |            |     | 4  |    |    |     |   | 82  | 7  | 20 |  |
| BM01205  |  |            |     | 5  |    |    |     |   | 101 | 7  | 20 |  |
| BM01206  |  |            |     | 6  |    |    |     |   | 120 | 7  | 20 |  |
| BM01251  | SPB125   | <b>125</b> | 132 | 1  | 58 | 45 |     |   | 25  | 1  | 10 |  |
| BM01252  |  |            |     | 2  | 60 | 55 |     |   | 44  | 1  | 15 |  |
| BM01253  |  |            |     | 3  |    | 60 | 83  |   | 63  | 2  | 15 |  |
| BM01254  |  |            |     | 4  |    | 60 | 83  |   | 82  | 2  | 20 |  |
| BM01255  |  |            |     | 5  |    | 60 | 83  |   | 101 | 2  | 20 |  |
| BM01256  |  |            |     | 6  |    | 60 | 83  |   | 120 | 2  | 20 |  |
| BM01321  | SPB132   | <b>132</b> | 139 | 1  | 60 | 45 |     |   | 25  | 1  | 15 |  |
| BM01322  |  |            |     | 2  | 60 | 55 |     |   | 44  | 1  | 15 |  |
| BM01323  |  |            |     | 3  |    | 60 | 88  |   | 63  | 2  | 15 |  |
| BM01324  |  |            |     | 4  |    | 60 | 88  |   | 82  | 2  | 20 |  |
| BM01325  |  |            |     | 5  |    | 60 | 88  |   | 101 | 2  | 20 |  |
| BM01326  |  |            |     | 6  |    | 60 | 88  |   | 120 | 2  | 20 |  |
| BM01401  | SPB140   | <b>140</b> | 147 | 1  | 65 | 45 |     |   | 25  | 1  | 20 |  |
| BM01402  |  |            |     | 2  | 65 | 55 |     |   | 44  | 1  | 20 |  |
| BM01403  |  |            |     | 3  |    | 60 | 98  |   | 63  | 2  | 20 |  |
| BM01404  |  |            |     | 4  |    | 60 | 98  |   | 82  | 2  | 20 |  |
| BM01405  |  |            |     | 5  |    | 60 | 98  |   | 101 | 2  | 20 |  |
| BM01406  |  |            |     | 6  |    | 60 | 98  |   | 120 | 2  | 20 |  |
| BM01501  | SPB150   | <b>150</b> | 157 | 1  | 65 | 45 |     |   | 25  | 1  | 20 |  |
| BM01502  |  |            |     | 2  | 65 | 55 |     |   | 44  | 1  | 20 |  |
| BM01503  |  |            |     | 3  |    | 60 | 108 |   | 63  | 2  | 20 |  |
| BM01504  |  |            |     | 4  |    | 60 | 108 |   | 82  | 2  | 20 |  |
| BM01505  |  |            |     | 5  |    | 60 | 108 |   | 101 | 2  | 20 |  |
| BM01506  |  |            |     | 6  |    | 60 | 108 |   | 120 | 2  | 20 |  |



| Cod. interno<br>Internal code<br>Internar Code<br>Code interne<br>Código interno | Descrizione<br>Description<br>Beschreibung<br>Description<br>Descripción | P          | O   | Gole<br>Grooves<br>Rillen<br>Gorges<br>Canales | N   | L  | D   | S  | B   | Forma<br>Form<br>Forme<br>Forme<br>Forma | d  | Peso<br>Weight<br>Gewicht<br>Poids<br>Peso |
|--|--|------------|-----|--|-----|----|-----|----|-----|--|----|--|
| BM01601  | SPB160   | <b>160</b> | 167 | 1  | 65  | 45 | 118 | 12 | 25  | 3  | 20 |  |
| BM01602  |  |            |     | 2  | 70  | 55 | 118 | 12 | 44  | 3  | 20 |  |
| BM01603  |  |            |     | 3  |     | 60 | 118 |    | 63  | 2  | 20 |  |
| BM01604  |  |            |     | 4  |     | 60 | 118 |    | 82  | 2  | 20 |  |
| BM01605  |  |            |     | 5  |     | 60 | 118 |    | 101 | 2  | 20 |  |
| BM01606  |  |            |     | 6  |     | 65 | 118 |    | 120 | 2  | 20 |  |
| BM01701  | SPB170   | <b>170</b> | 177 | 1  | 65  | 45 | 128 | 12 | 25  | 3  | 20 |  |
| BM01702  |  |            |     | 2  | 70  | 55 | 128 | 12 | 44  | 3  | 20 |  |
| BM01703  |  |            |     | 3  | 70  | 60 | 128 | 30 | 63  | 4  | 20 |  |
| BM01704  |  |            |     | 4  | 70  | 60 | 128 | 30 | 82  | 4  | 20 |  |
| BM01705  |  |            |     | 5  | 70  | 60 | 128 | 30 | 101 | 4  | 20 |  |
| BM01706  |  |            |     | 6  | 70  | 65 | 128 | 40 | 120 | 4  | 20 |  |
| BM01801  | SPB180   | <b>180</b> | 187 | 1  | 65  | 45 | 138 | 12 | 25  | 3  | 20 |  |
| BM01802  |  |            |     | 2  | 70  | 55 | 138 | 12 | 44  | 3  | 20 |  |
| BM01803  |  |            |     | 3  | 80  | 60 | 138 | 18 | 63  | 4  | 20 |  |
| BM01804  |  |            |     | 4  | 80  | 60 | 138 | 30 | 82  | 4  | 20 |  |
| BM01805  |  |            |     | 5  | 80  | 70 | 138 | 40 | 101 | 4  | 20 |  |
| BM01806  |  |            |     | 6  | 80  | 70 | 138 | 40 | 120 | 4  | 20 |  |
| BM01901  | SPB190   | <b>190</b> | 197 | 1  | 65  | 45 | 148 | 12 | 25  | 3  | 20 |  |
| BM01902  |  |            |     | 2  | 70  | 55 | 148 | 12 | 44  | 3  | 20 |  |
| BM02001  | SPB200   | <b>200</b> | 207 | 1  | 70  | 45 | 158 | 14 | 25  | 3  | 20 |  |
| BM02002  |  |            |     | 2  | 70  | 55 | 158 | 12 | 44  | 3  | 20 |  |
| BM02003  |  |            |     | 3  | 80  | 60 | 158 | 18 | 63  | 4  | 20 |  |
| BM02004  |  |            |     | 4  | 88  | 60 | 158 | 25 | 82  | 4  | 20 |  |
| BM02005  |  |            |     | 5  | 96  | 70 | 158 | 35 | 101 | 4  | 25 |  |
| BM02006  |  |            |     | 6  | 96  | 70 | 158 | 40 | 120 | 4  | 25 |  |
| BM02121  | SPB212   | <b>212</b> | 219 | 1  | 70  | 45 | 170 | 14 | 25  | 3  | 20 |  |
| BM02122  |  |            |     | 2  | 77  | 55 | 170 | 14 | 44  | 3  | 20 |  |
| BM02123  |  |            |     | 3  | 80  | 60 | 170 | 18 | 63  | 4  | 20 |  |
| BM02124  |  |            |     | 4  | 88  | 60 | 170 | 25 | 82  | 4  | 20 |  |
| BM02125  |  |            |     | 5  | 96  | 70 | 170 | 30 | 101 | 4  | 25 |  |
| BM02126  |  |            |     | 6  | 104 | 80 | 170 | 45 | 120 | 4  | 25 |  |
| BM02241  | SPB224   | <b>224</b> | 231 | 1  | 70  | 45 | 183 | 14 | 25  | 3  | 20 |  |
| BM02242  |  |            |     | 2  | 77  | 55 | 183 | 14 | 44  | 3  | 20 |  |
| BM02243  |  |            |     | 3  | 80  | 60 | 183 | 18 | 63  | 4  | 20 |  |
| BM02244  |  |            |     | 4  | 88  | 60 | 183 | 25 | 82  | 4  | 20 |  |
| BM02245  |  |            |     | 5  | 96  | 70 | 183 | 25 | 101 | 4  | 25 |  |
| BM02246  |  |            |     | 6  | 104 | 80 | 183 | 30 | 120 | 4  | 25 |  |
| BM02501  | SPB250   | <b>250</b> | 257 | 1  | 70  | 50 | 208 | 14 | 25  | 3  | 20 |  |
| BM02502  |  |            |     | 2  | 77  | 55 | 208 | 14 | 44  | 3  | 20 |  |
| BM02503  |  |            |     | 3  | 80  | 60 | 208 | 18 | 63  | 4  | 20 |  |
| BM02504  |  |            |     | 4  | 96  | 65 | 208 | 25 | 82  | 4  | 25 |  |
| BM02505  |  |            |     | 5  | 104 | 75 | 208 | 25 | 101 | 4  | 25 |  |
| BM02506  |  |            |     | 6  | 104 | 80 | 208 | 25 | 120 | 4  | 25 |  |
| BM02801  | SPB280   | <b>280</b> | 287 | 1  | 76  | 50 | 238 | 14 | 25  | 3  | 20 |  |
| BM02802  |  |            |     | 2  | 80  | 55 | 238 | 14 | 44  | 3  | 20 |  |
| BM02803  |  |            |     | 3  | 90  | 60 | 238 | 18 | 63  | 4  | 20 |  |
| BM02804  |  |            |     | 4  | 96  | 65 | 238 | 25 | 82  | 4  | 25 |  |
| BM02805  |  |            |     | 5  | 104 | 75 | 238 | 25 | 101 | 4  | 25 |  |
| BM02806  |  |            |     | 6  | 104 | 80 | 238 | 25 | 120 | 4  | 25 |  |
| BM03001  | SPB300   | <b>300</b> | 307 | 1  | 76  | 50 | 258 | 15 | 25  | 5  | 20 |  |
| BM03002  |  |            |     | 2  | 80  | 55 | 258 | 15 | 44  | 5  | 20 |  |
| BM03003  |  |            |     | 3  | 90  | 60 | 258 | 18 | 63  | 6  | 20 |  |
| BM03004  |  |            |     | 4  | 96  | 65 | 258 | 20 | 82  | 6  | 25 |  |
| BM03005  |  |            |     | 5  | 104 | 75 | 258 | 22 | 101 | 6  | 25 |  |
| BM03006  |  |            |     | 6  | 104 | 80 | 258 | 24 | 120 | 6  | 25 |  |

| Cod. interno<br>Internal code<br>Internar Code<br>Code interne<br>Código interno | Descrizione<br>Description<br>Beschreibung<br>Description<br>Descripción | P          | O   | Gole<br>Grooves<br>Rillen<br>Gorges<br>Canales | N   | L   | D   | S  | B   | Forma<br>Form<br>Forme<br>Forme<br>Forma | d  | Peso<br>Weight<br>Gewicht<br>Poids<br>Peso |
|--|--|------------|-----|--|-----|-----|-----|----|-----|--|----|--|
| BM03151  | SPB315   | <b>315</b> | 322 | 1  | 76  | 50  | 273 | 15 | 25  | 5  | 20 |  |
| BM03152  |  |            |     | 2  | 88  | 60  | 273 | 15 | 44  | 5  | 20 |  |
| BM03153  |  |            |     | 3  | 90  | 60  | 273 | 18 | 63  | 6  | 20 |  |
| BM03154  |  |            |     | 4  | 96  | 65  | 273 | 20 | 82  | 6  | 25 |  |
| BM03155  |  |            |     | 5  | 104 | 75  | 273 | 22 | 101 | 6  | 25 |  |
| BM03156  |  |            |     | 6  | 120 | 90  | 273 | 24 | 120 | 6  | 25 |  |
| BM03551  | SPB355   | <b>355</b> | 362 | 1  | 80  | 50  | 313 | 15 | 25  | 5  | 20 |  |
| BM03552  |  |            |     | 2  | 88  | 60  | 313 | 15 | 44  | 5  | 20 |  |
| BM03553  |  |            |     | 3  | 92  | 60  | 313 | 18 | 63  | 6  | 25 |  |
| BM03554  |  |            |     | 4  | 96  | 65  | 313 | 20 | 82  | 6  | 25 |  |
| BM03555  |  |            |     | 5  | 104 | 75  | 313 | 22 | 101 | 6  | 25 |  |
| BM03556  |  |            |     | 6  | 120 | 90  | 313 | 24 | 120 | 6  | 25 |  |
| BM04001  | SPB400   | <b>400</b> | 407 | 1  | 85  | 55  | 358 | 18 | 25  | 5  | 20 |  |
| BM04002  |  |            |     | 2  | 88  | 60  | 358 | 18 | 44  | 5  | 20 |  |
| BM04003  |  |            |     | 3  | 96  | 65  | 358 | 22 | 63  | 5  | 25 |  |
| BM04004  |  |            |     | 4  | 104 | 75  | 358 | 24 | 82  | 6  | 25 |  |
| BM04005  |  |            |     | 5  | 112 | 85  | 358 | 26 | 101 | 6  | 25 |  |
| BM04006  |  |            |     | 6  | 120 | 100 | 358 | 28 | 120 | 6  | 25 |  |
| BM04253  | SPB425   | <b>425</b> | 432 | 3  | 96  | 65  | 383 | 22 | 63  | 5  | 20 |  |
| BM04254  |  |            |     | 4  | 104 | 75  | 383 | 24 | 82  | 6  | 25 |  |
| BM04255  |  |            |     | 5  | 112 | 85  | 383 | 26 | 101 | 6  | 25 |  |
| BM04501  | SPB450   | <b>450</b> | 457 | 1  | 90  | 60  | 408 | 18 | 25  | 5  | 20 |  |
| BM04502  |  |            |     | 2  | 90  | 60  | 408 | 18 | 44  | 5  | 20 |  |
| BM04503  |  |            |     | 3  | 96  | 65  | 408 | 22 | 63  | 5  | 25 |  |
| BM04504  |  |            |     | 4  | 104 | 75  | 408 | 24 | 82  | 6  | 25 |  |
| BM04505  |  |            |     | 5  | 112 | 85  | 408 | 26 | 101 | 6  | 25 |  |
| BM04506  |  |            |     | 6  | 120 | 100 | 408 | 28 | 120 | 6  | 25 |  |
| BM05001  | SPB500   | <b>500</b> | 507 | 1  | 100 | 60  | 458 | 18 | 25  | 5  | 25 |  |
| BM05002  |  |            |     | 2  | 100 | 65  | 458 | 20 | 44  | 5  | 25 |  |
| BM05003  |  |            |     | 3  | 104 | 75  | 458 | 24 | 63  | 5  | 25 |  |
| BM05004  |  |            |     | 4  | 112 | 85  | 458 | 28 | 82  | 5  | 25 |  |
| BM05005  |  |            |     | 5  | 120 | 90  | 458 | 30 | 101 | 6  | 25 |  |
| BM05006  |  |            |     | 6  | 128 | 105 | 458 | 33 | 120 | 6  | 25 |  |
| BM05601  | SPB560   | <b>560</b> | 567 | 1  | 100 | 60  | 518 | 18 | 25  | 5  | 25 |  |
| BM05602  |  |            |     | 2  | 100 | 65  | 518 | 20 | 44  | 5  | 25 |  |
| BM05603  |  |            |     | 3  | 104 | 75  | 518 | 24 | 63  | 5  | 25 |  |
| BM05604  |  |            |     | 4  | 112 | 85  | 518 | 28 | 82  | 5  | 25 |  |
| BM05605  |  |            |     | 5  | 120 | 90  | 518 | 30 | 101 | 6  | 25 |  |
| BM05606  |  |            |     | 6  | 128 | 105 | 518 | 33 | 120 | 6  | 25 |  |
| BM06001  | SPB600   | <b>600</b> | 607 | 1  | 100 | 60  | 558 | 18 | 25  | 5  | 25 |  |
| BM06002  |  |            |     | 2  | 100 | 65  | 558 | 20 | 44  | 5  | 25 |  |
| BM06003  |  |            |     | 3  | 104 | 75  | 558 | 24 | 63  | 5  | 25 |  |
| BM06004  |  |            |     | 4  | 115 | 85  | 558 | 28 | 82  | 5  | 25 |  |
| BM06005  |  |            |     | 5  | 120 | 90  | 558 | 30 | 101 | 6  | 25 |  |
| BM06006  |  |            |     | 6  | 129 | 105 | 558 | 33 | 120 | 6  | 25 |  |
| BM06301  | SPB630   | <b>630</b> | 637 | 1  | 100 | 60  | 588 | 18 | 25  | 5  | 25 |  |
| BM06302  |  |            |     | 2  | 100 | 65  | 588 | 20 | 44  | 5  | 25 |  |
| BM06303  |  |            |     | 3  | 105 | 75  | 588 | 26 | 63  | 5  | 25 |  |
| BM06304  |  |            |     | 4  | 120 | 85  | 588 | 28 | 82  | 5  | 25 |  |
| BM06305  |  |            |     | 5  | 128 | 90  | 588 | 30 | 101 | 6  | 25 |  |
| BM06306  |  |            |     | 6  | 140 | 105 | 588 | 33 | 120 | 6  | 25 |  |

| Cod. interno<br>Internal code<br>Intern Code<br>Code interne<br>Código interno | Descrizione<br>Description<br>Beschreibung<br>Description<br>Descripción | P          | O     | Gole<br>Grooves<br>Rillen<br>Gorges<br>Canales | N  | L  | D   | S  | B    | Forma<br>Form<br>Forme<br>Forme<br>Forma | d  | Peso<br>Weight<br>Gewicht<br>Poids<br>Peso |      |      |       |      |       |    |    |
|--|--|------------|-------|--|----|----|-----|----|------|--|----|--|------|------|-------|------|-------|----|----|
| CM01001  | SPC100   | <b>100</b> | 109,6 | 1  | 60 | 50 |     |    | 34,0 | 1  | 15 |  |      |      |       |      |       |    |    |
| CM01201  | SPC120   | <b>120</b> | 129,6 | 1  | 65 | 50 |     |    | 34,0 | 1  | 15 |  |      |      |       |      |       |    |    |
| CM01202  |  |            |       | 2  |    |    |     |    |      |  |    |  | 59,5 | 7    | 15    |      |       |    |    |
| CM01401  | SPC140   | <b>140</b> | 149,6 | 1  | 70 | 50 |     |    | 34,0 | 1  | 20 |  |      |      |       |      |       |    |    |
| CM01402  |  |            |       | 2  |    |    |     |    |      |  |    |  | 59,5 | 7    | 20    |      |       |    |    |
| CM01403  |  |            |       | 3  |    |    |     |    |      |  |    |  | 65   | 83   | 85,0  | 2    | 20    |    |    |
| CM01404  |  |            |       | 4  |    |    |     |    |      |  |    |  | 80   | 83   | 110,5 | 2    | 20    |    |    |
| CM01501  | SPC150   | <b>150</b> | 159,6 | 1  | 70 | 50 |     |    | 34,0 | 1  | 20 |  |      |      |       |      |       |    |    |
| CM01502  |  |            |       | 2  |    |    |     |    |      |  |    |  | 59,5 | 7    | 20    |      |       |    |    |
| CM01503  |  |            |       | 3  |    |    |     |    |      |  |    |  | 65   | 93   | 85,0  | 2    | 20    |    |    |
| CM01504  |  |            |       | 4  |    |    |     |    |      |  |    |  | 80   | 93   | 110,5 | 2    | 20    |    |    |
| CM01505  |  |            |       | 5  |    |    |     |    |      |  |    |  | 96   | 93   | 136,0 | 2    | 20    |    |    |
| CM01601  | SPC160   | <b>160</b> | 169,6 | 1  | 72 | 50 | 103 |    | 34,0 | 1  | 20 |  |      |      |       |      |       |    |    |
| CM01602  |  |            |       | 2  |    |    |     |    |      |  |    |  | 103  | 59,5 | 7     | 20   |       |    |    |
| CM01603  |  |            |       | 3  |    |    |     |    |      |  |    |  | 65   | 103  | 85,0  | 2    | 20    |    |    |
| CM01604  |  |            |       | 4  |    |    |     |    |      |  |    |  | 80   | 103  | 110,5 | 2    | 20    |    |    |
| CM01605  |  |            |       | 5  |    |    |     |    |      |  |    |  | 96   | 103  | 136,0 | 2    | 20    |    |    |
| CM01606  |  |            |       | 6  |    |    |     |    |      |  |    |  | 96   | 103  | 161,5 | 2    | 20    |    |    |
| CM01801  | SPC180   | <b>180</b> | 189,6 | 1  | 76 | 50 | 123 | 16 | 34,0 | 3  | 20 |  |      |      |       |      |       |    |    |
| CM01802  |  |            |       | 2  |    |    |     |    |      |  |    |  | 80   | 123  | 30    | 59,5 | 8     | 20 |    |
| CM01803  |  |            |       | 3  |    |    |     |    |      |  |    |  | 82   | 65   | 123   | 35   | 85,0  | 4  | 20 |
| CM01804  |  |            |       | 4  |    |    |     |    |      |  |    |  | 82   | 80   | 123   | 60   | 110,5 | 4  | 20 |
| CM01805  |  |            |       | 5  |    |    |     |    |      |  |    |  | 82   | 96   | 123   | 75   | 136,0 | 4  | 20 |
| CM01806  |  |            |       | 6  |    |    |     |    |      |  |    |  | 82   | 96   | 123   | 75   | 161,5 | 4  | 20 |
| CM02001  | SPC200   | <b>200</b> | 209,6 | 1  | 76 | 50 | 143 | 16 | 34,0 | 3  | 20 |  |      |      |       |      |       |    |    |
| CM02002  |  |            |       | 2  |    |    |     |    |      |  |    |  | 80   | 60   | 143   | 20   | 59,5  | 3  | 20 |
| CM02003  |  |            |       | 3  |    |    |     |    |      |  |    |  | 86   | 65   | 143   | 25   | 85,0  | 4  | 20 |
| CM02004  |  |            |       | 4  |    |    |     |    |      |  |    |  | 90   | 90   | 143   | 70   | 110,5 | 4  | 20 |
| CM02005  |  |            |       | 5  |    |    |     |    |      |  |    |  | 90   | 100  | 143   | 80   | 136,0 | 4  | 25 |
| CM02006  |  |            |       | 6  |    |    |     |    |      |  |    |  | 90   | 100  | 143   | 80   | 161,5 | 4  | 25 |
| CM02241  | SPC224   | <b>224</b> | 233,6 | 1  | 86 | 50 | 168 | 16 | 34,0 | 3  | 20 |  |      |      |       |      |       |    |    |
| CM02242  |  |            |       | 2  |    |    |     |    |      |  |    |  | 88   | 60   | 168   | 18   | 59,5  | 3  | 20 |
| CM02243  |  |            |       | 3  |    |    |     |    |      |  |    |  | 90   | 70   | 168   | 21   | 85,0  | 4  | 20 |
| CM02244  |  |            |       | 4  |    |    |     |    |      |  |    |  | 90   | 90   | 168   | 50   | 110,5 | 4  | 25 |
| CM02245  |  |            |       | 5  |    |    |     |    |      |  |    |  | 90   | 100  | 168   | 60   | 136,0 | 4  | 25 |
| CM02246  |  |            |       | 6  |    |    |     |    |      |  |    |  | 90   | 100  | 168   | 60   | 161,5 | 4  | 25 |
| CM02501  | SPC250   | <b>250</b> | 259,6 | 1  | 86 | 50 | 193 | 16 | 34,0 | 3  | 20 |  |      |      |       |      |       |    |    |
| CM02502  |  |            |       | 2  |    |    |     |    |      |  |    |  | 92   | 60   | 193   | 18   | 59,5  | 3  | 20 |
| CM02503  |  |            |       | 3  |    |    |     |    |      |  |    |  | 92   | 70   | 193   | 21   | 85,0  | 4  | 20 |
| CM02504  |  |            |       | 4  |    |    |     |    |      |  |    |  | 100  | 90   | 193   | 30   | 110,5 | 4  | 25 |
| CM02505  |  |            |       | 5  |    |    |     |    |      |  |    |  | 102  | 100  | 193   | 50   | 136,0 | 4  | 25 |
| CM02506  |  |            |       | 6  |    |    |     |    |      |  |    |  | 102  | 100  | 193   | 50   | 161,5 | 4  | 25 |
| CM02801  | SPC280   | <b>280</b> | 289,6 | 1  | 86 | 50 | 223 | 16 | 34,0 | 3  | 20 |  |      |      |       |      |       |    |    |
| CM02802  |  |            |       | 2  |    |    |     |    |      |  |    |  | 92   | 60   | 223   | 18   | 59,5  | 3  | 20 |
| CM02803  |  |            |       | 3  |    |    |     |    |      |  |    |  | 92   | 70   | 223   | 21   | 85,0  | 4  | 20 |
| CM02804  |  |            |       | 4  |    |    |     |    |      |  |    |  | 100  | 90   | 223   | 25   | 110,5 | 4  | 25 |
| CM02805  |  |            |       | 5  |    |    |     |    |      |  |    |  | 102  | 100  | 223   | 40   | 136,0 | 4  | 25 |
| CM02806  |  |            |       | 6  |    |    |     |    |      |  |    |  | 102  | 100  | 223   | 40   | 161,5 | 4  | 25 |
| CM03001  | SPC300   | <b>300</b> | 309,6 | 1  | 86 | 50 | 243 | 16 | 34,0 | 3  | 20 |  |      |      |       |      |       |    |    |
| CM03002  |  |            |       | 2  |    |    |     |    |      |  |    |  | 92   | 60   | 243   | 18   | 59,5  | 3  | 20 |
| CM03003  |  |            |       | 3  |    |    |     |    |      |  |    |  | 92   | 70   | 243   | 21   | 85,0  | 4  | 20 |
| CM03004  |  |            |       | 4  |    |    |     |    |      |  |    |  | 100  | 90   | 243   | 25   | 110,5 | 4  | 25 |
| CM03005  |  |            |       | 5  |    |    |     |    |      |  |    |  | 104  | 100  | 243   | 25   | 136,0 | 4  | 25 |
| CM03006  |  |            |       | 6  |    |    |     |    |      |  |    |  | 104  | 100  | 243   | 25   | 161,5 | 4  | 25 |

| Cod. interno<br>Internal code<br>Internar Code<br>Code interne<br>Código interno | Descrizione<br>Description<br>Beschreibung<br>Description<br>Descripción | P          | O     | Gole<br>Grooves<br>Rillen<br>Gorges<br>Canales | N   | L   | D   | S  | B     | Forma<br>Form<br>Forme<br>Forme<br>Forma | d  | Peso<br>Weight<br>Gewicht<br>Poids<br>Peso |
|--|--|------------|-------|--|-----|-----|-----|----|-------|--|----|--|
| CM03151  | SPC315   | <b>315</b> | 324,6 | 1  | 92  | 50  | 258 | 16 | 34,0  | 5  | 20 |  |
| CM03152  |  |            |       | 2  | 92  | 60  | 258 | 18 | 59,5  | 5  | 20 |  |
| CM03153  |  |            |       | 3  | 92  | 70  | 258 | 22 | 85,0  | 6  | 25 |  |
| CM03154  |  |            |       | 4  | 110 | 90  | 258 | 25 | 110,5 | 4  | 25 |  |
| CM03155  |  |            |       | 5  | 112 | 100 | 258 | 25 | 136,0 | 4  | 25 |  |
| CM03156  |  |            |       | 6  | 112 | 100 | 258 | 28 | 161,5 | 4  | 25 |  |
| CM03351  | SPC335   | <b>335</b> | 344,6 | 1  | 100 | 50  | 283 | 16 | 34,0  | 5  | 20 |  |
| CM03352  |  |            |       | 2  | 100 | 60  | 283 | 18 | 59,5  | 5  | 20 |  |
| CM03353  |  |            |       | 3  | 100 | 70  | 283 | 22 | 85,0  | 6  | 25 |  |
| CM03354  |  |            |       | 4  | 114 | 90  | 283 | 25 | 110,5 | 6  | 25 |  |
| CM03355  |  |            |       | 5  | 114 | 100 | 283 | 28 | 136,0 | 6  | 25 |  |
| CM03356  |  |            |       | 6  | 114 | 100 | 283 | 30 | 161,5 | 6  | 25 |  |
| CM03551  | SPC355   | <b>355</b> | 364,6 | 1  | 110 | 50  | 298 | 16 | 34,0  | 5  | 20 |  |
| CM03552  |  |            |       | 2  | 110 | 60  | 298 | 18 | 59,5  | 5  | 25 |  |
| CM03553  |  |            |       | 3  | 110 | 70  | 298 | 22 | 85,0  | 6  | 25 |  |
| CM03554  |  |            |       | 4  | 114 | 90  | 298 | 25 | 110,5 | 6  | 25 |  |
| CM03555  |  |            |       | 5  | 114 | 100 | 298 | 28 | 136,0 | 6  | 25 |  |
| CM03556  |  |            |       | 6  | 114 | 100 | 298 | 30 | 161,5 | 6  | 25 |  |
| CM04001  | SPC400   | <b>400</b> | 409,6 | 1  | 110 | 60  | 343 | 18 | 34,0  | 5  | 25 |  |
| CM04002  |  |            |       | 2  | 110 | 70  | 343 | 20 | 59,5  | 5  | 25 |  |
| CM04003  |  |            |       | 3  | 114 | 90  | 343 | 24 | 85,0  | 5  | 25 |  |
| CM04004  |  |            |       | 4  | 114 | 90  | 343 | 26 | 110,5 | 6  | 25 |  |
| CM04005  |  |            |       | 5  | 120 | 100 | 343 | 28 | 136,0 | 6  | 25 |  |
| CM04006  |  |            |       | 6  | 120 | 100 | 343 | 30 | 161,5 | 6  | 25 |  |
| CM04501  | SPC450   | <b>450</b> | 459,6 | 1  | 110 | 60  | 393 | 18 | 34,0  | 5  | 25 |  |
| CM04502  |  |            |       | 2  | 110 | 70  | 393 | 20 | 59,5  | 5  | 25 |  |
| CM04503  |  |            |       | 3  | 114 | 90  | 393 | 24 | 85,0  | 5  | 25 |  |
| CM04504  |  |            |       | 4  | 120 | 90  | 393 | 28 | 110,5 | 6  | 25 |  |
| CM04505  |  |            |       | 5  | 120 | 100 | 393 | 30 | 136,0 | 6  | 25 |  |
| CM04506  |  |            |       | 6  | 120 | 100 | 393 | 32 | 161,5 | 6  | 25 |  |
| CM05001  | SPC500   | <b>500</b> | 509,6 | 1  | 114 | 60  | 443 | 18 | 34,0  | 5  | 25 |  |
| CM05002  |  |            |       | 2  | 114 | 70  | 443 | 20 | 59,5  | 5  | 25 |  |
| CM05003  |  |            |       | 3  | 114 | 90  | 443 | 24 | 85,0  | 5  | 25 |  |
| CM05004  |  |            |       | 4  | 126 | 90  | 443 | 28 | 110,5 | 6  | 25 |  |
| CM05005  |  |            |       | 5  | 126 | 100 | 443 | 30 | 136,0 | 6  | 25 |  |
| CM05006  |  |            |       | 6  | 126 | 100 | 443 | 32 | 161,5 | 6  | 25 |  |
| CM05601  | SPC560   | <b>560</b> | 569,6 | 1  | 114 | 60  | 503 | 20 | 34,0  | 5  | 25 |  |
| CM05602  |  |            |       | 2  | 114 | 70  | 503 | 24 | 59,5  | 5  | 25 |  |
| CM05603  |  |            |       | 3  | 114 | 90  | 503 | 28 | 85,0  | 5  | 25 |  |
| CM05604  |  |            |       | 4  | 130 | 100 | 503 | 30 | 110,5 | 6  | 25 |  |
| CM05605  |  |            |       | 5  | 130 | 100 | 503 | 32 | 136,0 | 6  | 25 |  |
| CM05606  |  |            |       | 6  | 130 | 100 | 503 | 35 | 161,5 | 6  | 25 |  |
| CM06001  | SPC600   | <b>600</b> | 609,6 | 1  | 114 | 60  | 543 | 20 | 34,0  | 5  | 25 |  |
| CM06002  |  |            |       | 2  | 114 | 70  | 543 | 24 | 59,5  | 5  | 25 |  |
| CM06003  |  |            |       | 3  | 114 | 90  | 543 | 28 | 85,0  | 5  | 25 |  |
| CM06004  |  |            |       | 4  | 130 | 90  | 543 | 30 | 110,5 | 6  | 25 |  |
| CM06005  |  |            |       | 5  | 130 | 100 | 543 | 32 | 136,0 | 6  | 25 |  |
| CM06006  |  |            |       | 6  | 130 | 100 | 543 | 35 | 161,5 | 6  | 25 |  |
| CM06301  | SPC630   | <b>630</b> | 639,6 | 1  | 114 | 60  | 573 | 20 | 34,0  | 5  | 25 |  |
| CM06302  |  |            |       | 2  | 114 | 70  | 573 | 24 | 59,5  | 5  | 25 |  |
| CM06303  |  |            |       | 3  | 114 | 90  | 573 | 28 | 85,0  | 5  | 25 |  |
| CM06304  |  |            |       | 4  | 130 | 90  | 573 | 30 | 110,5 | 6  | 25 |  |
| CM06305  |  |            |       | 5  | 130 | 100 | 573 | 32 | 136,0 | 6  | 25 |  |
| CM06306  |  |            |       | 6  | 130 | 100 | 573 | 35 | 161,5 | 6  | 25 |  |

**Morskate®**



Any questions? Please contact us.

**Morskate Aandrijvingen BV**

Oosterveldsingel 47A  
7558 PJ Hengelo (Ov)  
The Netherlands

NL

T +31 (0)74 - 760 11 11  
info@morskateaandrijvingen.nl  
www.morskateaandrijvingen.nl

DE

T +49 692 - 222 34 95  
info@morskateantriebstechnik.de  
www.morskateantriebstechnik.de

EN

T +31 (0)74 - 760 11 11  
info@morskatedrivetechnology.com  
www.morskatedrivetechnology.com